

 **MISUTONIDA**
  *italian style* **4x4**
accessories

OPEL MOKKA 2012



Item Code

Codice Articolo

Référence Article

P/318/IX

GB

**STAINLESS STEEL
SIDE STEPS**

ITA












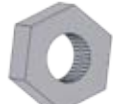




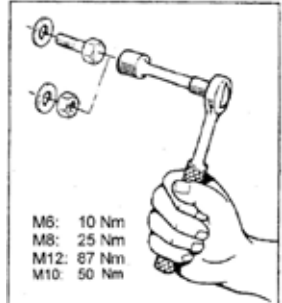
**PEDANA SOTTOPORTA
IN ACCIAIO INOX**

FR

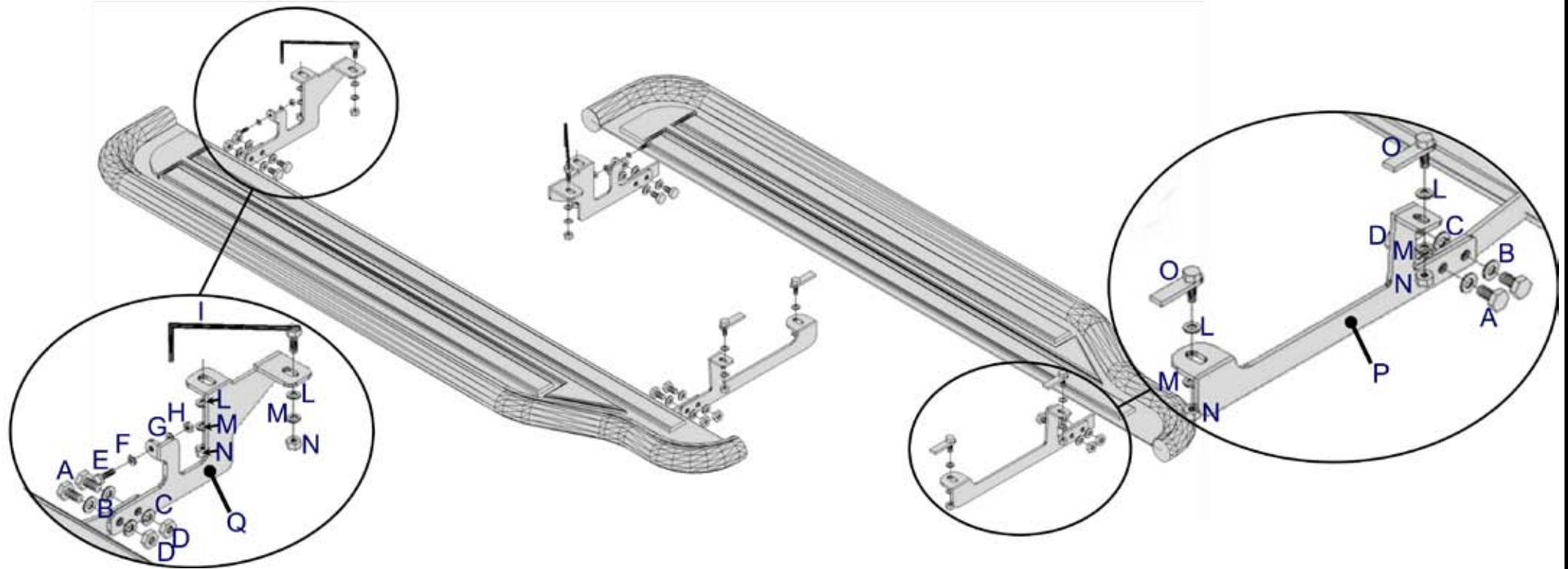
**MARCHEPIEDS
EN ACCIER INOX**

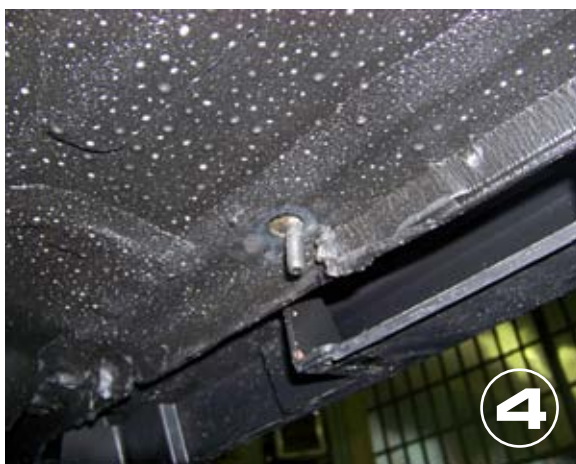
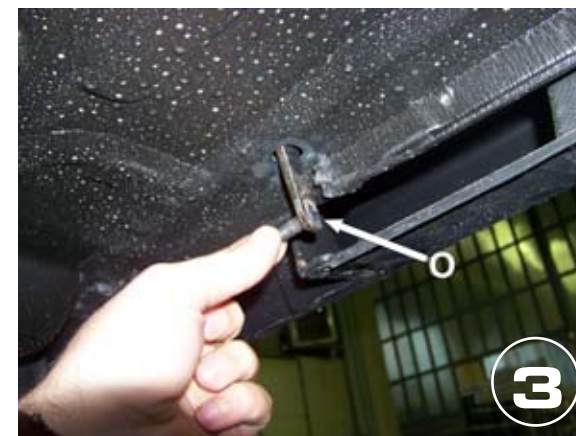
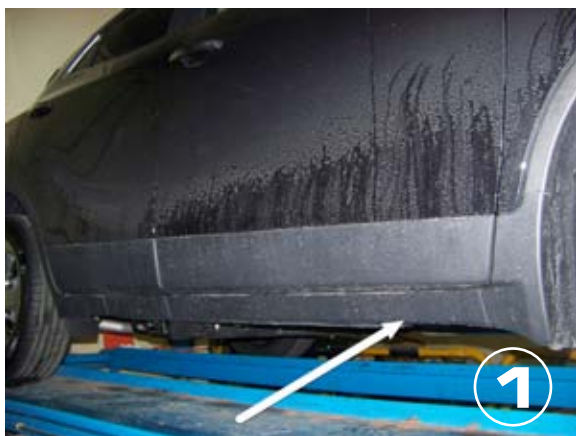
OPEL MOKKA 2012

Part List
 Lista della bulloneria
 Liste des pièces

A  TE 10X25 x 8	B  Ø 10 x 8	C  Ø 10 x 8	D  M 10 x 8	E  TE 6X25 x 2
F  Ø 6 Big Grandi x 2	G  Ø 6 x 2	H  M 6 x 2	I  SMA/298 x 2	L  Ø 8 Big Grandi x 8
M  Ø 8 x 8	N  M 8 x 8	O  P/318 x 4	P  P/318/B x 2	Q  P/318/C x 2
 Cappelletti M10 x 16				 <p>M6: 10 Nm M8: 25 Nm M12: 67 Nm M10: 50 Nm</p>

OPEL MOKKA 2012



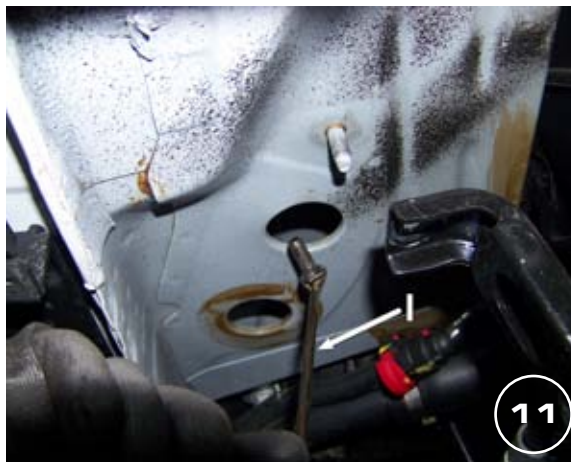


Date Data Date	Item Code Cod.Articolo Réf. Article	Vehicle model Modello Veicolo Modèle de Voiture
19/02/13	P/318/IX	OPEL MOKKA 2012

Document checked and approved by
Documento controllato ed approvato da
Document contrôlé et approuvé par

GALLO CLAUDIO





Date Data Date	Item Code Cod.Articolo Réf. Article	Vehicle model Modello Veicolo Modèle de Voiture
19/02/13	P/318/IX	OPEL MOKKA 2012

Document checked and approved by
Documento controllato ed approvato da
Document contrôlé et approuvé par

GALLO CLAUDIO





Date Data Date	Item Code Cod.Articolo Réf. Article	Vehicle model Modello Veicolo Modèle de Voiture
19/02/13	P/318/IX	OPEL MOKKA 2012

Document checked and approved by
Documento controllato ed approvato da
Document contrôlé et approuvé par

GALLO CLAUDIO

